

EN

CN

AE

RU

DE

ES

FR

IT

Barista Duo

Grind & Brew Coffee Machine

SKU H7B

Read this manual thoroughly before using and save it for future reference

I: Important Safeguards


1. Read all instructions.
2. Before using, check that the voltage of wall outlet corresponds to rated voltage marked on the rating plate.
3. This appliance has been incorporated with a grounded plug. Please ensure the wall outlet in your house is well earthed.
4. To protect against fire, electric shock and injury to person, do not immerse main parts of the propipe, cord, plug, in water or other liquid.
5. The appliance must not be immersed.
6. Remove plug from wall outlet before cleaning and when not in use. Allow appliance cool down completely before taking off, attaching components or before cleaning.
7. Do not operate any appliance with a damaged cord or plug or after the appliance malfunctions, or is dropped or damaged in any manner. Return appliance to the nearest authorized service facility for examination repair or electrical or mechanical adjustment.
8. The use of accessory attachments not recommended by the appliance manufacturer may result in fire, electric shock or injury to persons.
9. Place appliance on flat surface or table, do not hang power cord over the edge of table or counter.
10. Ensure the power cord do not touch hot surface of appliance.
11. Do not place the coffee maker on hot surface or beside fire in order to avoid to be damaged.
12. To disconnect, remove plug from wall outlet, always hold the plug, but never pull the cord.
13. Do not use appliance for other than intended use and place it in a dry environment.
14. Be careful not to get burned by the steam.
15. Do not touch the hot surface of appliance (such as steam wand, and the steel mesh just boiling). Use handle or knobs.
16. Do not let the coffee maker operate without water.
17. DO NOT remove the metal funnel while brewing coffee. Please remove the metal funnel to make additional coffee after finish brewing for more than 10 seconds. Caution should also be taken while removing the metal funnel since the metal parts will be hot, Please make sure to hold it by the handle and to use the filter retention clip to dispose the grounds. Caution should be taken when moving unit with hot liquids.
18. Connect plug to wall outlet before using and turn any switch off before plug is removed from wall outlet.
19. This appliance can be used by children aged from 8 years and above if they have been given supervision or instruction concerning use of the appliance in a safe way and if they understand the hazards involved. Cleaning and user maintenance shall not be made by children unless they are older than 8 and supervised. Keep the appliance and its cord out of reach of children aged less than 8 years.
20. Appliances can be used by persons with reduced physical, sensory or mental capabilities or lack of experience and knowledge if they have been given supervision or instruction concerning use of the appliance in a safe way and understand the hazards involved.
21. Children shall not play with the appliance.
22. This appliance is intended to be used in household and similar applications such as:
 - staff kitchen areas in shops, offices and other working environments;
 - farm houses;
 - by clients in hotels, motels and other residential type environments;
 - bed and breakfast type environments.

23. The bean box does not have the function of sealing, please clean the bean box in time, and pour the coffee beans back into other tightly packed containers, so as not to affect the coffee taste and the normal use of the bean grinder due to the moisture return of the coffee beans.

24. Save these instructions.

Warning: High pressure

In order to prevent the hot steam and hot water from scalding the body or causing other personal injury, and to prevent damage to the product, before you use this coffee

Do not remove the tank or funnel assembly while making coffee or milk foam. Before you remove the funnel assembly to make another cup of coffee, please ensure that the coffee machine is in standby state. If you want to add more water to the tank, please press the power switch  button to ensure that the power of the product is off. When extracting coffee, ensure that the high pressure funnel has been rotated to the specified position to avoid the release due to pressure during use, which may cause human injury.

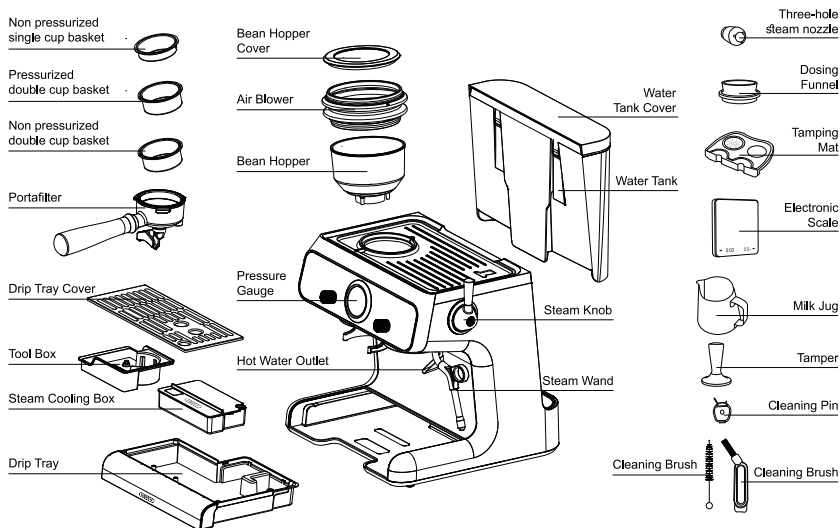
Warning: High Temperature

When the machine is working, do not put your hands and other parts of your body into the bottom of the funnel or steam pipe to prevent scalding; It is forbidden to touch the steam pipe with hands or other parts of the body at any time. When rotating the steam pipe, you can only contact the silicone sleeve on the steam pipe to prevent scalding.

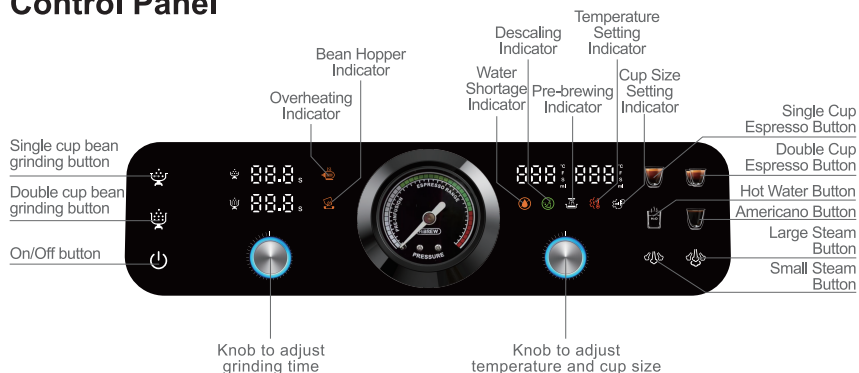
EN

II: Description of product components

■ **Components**



■ Control Panel



■ Button Introduction

- On/Off button
- Single cup bean grinding button (default 9s). Press and hold this button for 2 seconds to enter the time adjustment mode, rotate the left knob to adjust +1s/-0.1s.
- Double cup bean grinding button (default 13s). Press and hold this button for 2 seconds to enter the time adjustment mode, rotate the left knob to adjust +1s / -0.1s
- Single cup espresso button (default 35ml). Press and hold this button for 2 seconds to enter the cup volume adjustment mode, the cup volume light will turn on, rotate the right knob to adjust the cup volume.
- Double cup espresso button (default 70ml). Press and hold this button for 2 seconds to enter the cup volume adjustment mode, the cup volume light will turn on, rotate the right knob to adjust the cup volume.
- Americano button (default 150ml of hot water and then 50ml of coffee). Press and hold the button for three seconds to enter the cup volume adjustment mode, and buttons are flashing, then press the button. button flashes, and light does not flash, cup volume light turn on, rotate the right knob to adjust the coffee cup volume. Then press button to adjust the volume of hot water cup, button blinks and light does not flash, the cup volume light is on. rotate the right knob to adjust the hot water cup volume. Stop the operation for 5 seconds or press other buttons to lock the current parameter.
- Hot water button, default 200ml/can be stopped manually, default temperature 92°C. Press and hold this button for 2 seconds to enter the cup size setting. The cup volume light will turn on, turn the right knob to adjust the cup volume of hot water.
- Small steam button, default 130 degrees. (Press the steam button and then open the steam valve knob out of steam). Long press " " 2 seconds to enter the steam adjustment mode, rotate the right adjustment knob to adjust the temperature, select the temperature with 125 °C/130 °C/135 °C optional. Stop the operation for 5 seconds or press other buttons to lock the current parameters.

- Large steam button, default 145 °C. (Press the steam button and then turn on the steam knob). Long press "☺" for 2 seconds to enter the adjustment mode, rotate the right adjustment knob to adjust the temperature, the selected temperature is 140°C/145°C/150°C optional. Stop operation for 5 seconds or press other buttons to lock the current parameters.
- The knob on left is to adjust the grinding time, and the knob on right is to adjust the cup volume and temperature (the light only comes on when the setting button is activated)
- Bean box indicator (blinks only if not install)
- Tank water shortage indicator (blinks only when lack of water)
- Sharpener overheating indicator (blinks when the motor reaches the set limit and the machine cannot work)
- Cup volume setting prompt light, long press ☺ or ☹ or ☺ or ☹ button to enter the adjustment mode, the cup volume ☺ light is on, after locking the parameters, the light is off.
- Temperature setting light. Press the "☺" and "☹" buttons at the same time to enter the temperature adjustment mode, the temperature adjustment light "☺" is on, and the coffee extraction temperature has 80°C/85°C/90°C/91°C/92°C/93°C/94°C/95°C to choose from. Turn the right knob to adjust the extraction temperature. Stop operation for 5 seconds or press other buttons to lock the current parameters, "☺" is off.
- Pre-brew indicator (10 seconds adjustable), press ☺ and ☹ buttons at the same time to enter the pre-brew setting. The right knob adjusts the brewing time. Stop the operation for 5 seconds or press other buttons to lock the current parameters, after the setting is completed, the indicator light will not go out unless the set value is 0.
- Coffee maker descaling indicator. Press the "☺" and "☹" buttons at the same time to enter the descaling mode. Refer to the descaling procedure that follows for details.

■ Tool Box

This product is equipped with auxiliary tools, cleaning pin and cleaning brush are placed in a separate tool box, single or double cup filter screen can also be placed in the tool box, easy storage. The tool box is placed at the lower left of the machine, which can be seen by removing the water tray. (Figure 1)

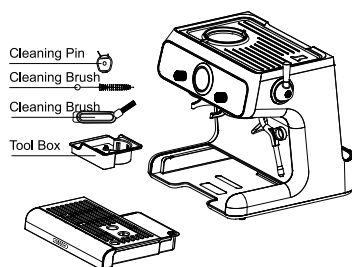


Figure 1

■ Cleaning Pin

If the cleaning needle is used to clean the single and double cup filter screen and steam nozzle, the thick one is used to clean the steam nozzle and the thin one is used to clean the filter screen (Figure 2).

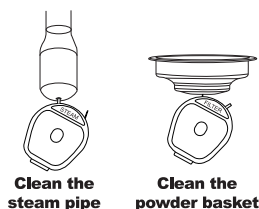


Figure 2

▪ Cleaning Brush

The cleaning brush is mainly used to clean the bean grinding system; Referring to the cleaning description of the bean grinder, after removing the bean grinding wheel, you can use the cleaning brush to clean the powder chamber and powder channel.

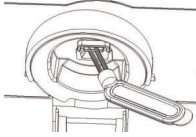


Figure 3

Clean the anti-static device and coffee power outlet (if coffee powder coming out slower than usual or coffee powder floats, clean the anti-static device and the coffee powder outlet with attached cleaning brush as Figure 3)

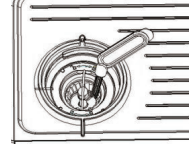
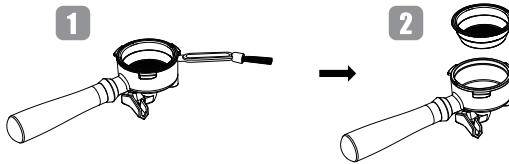


Figure 4

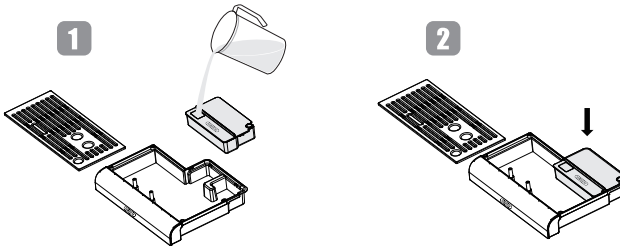
Clean the grinder chamber and the powder channel with attached cleaning brush as Figure 4.



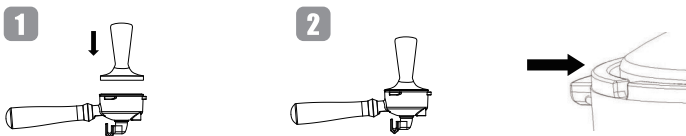
The rear end of cleaning brush could be used to detach filter from portafilter as Figure 5

▪ Steam Cooling Box

1. In order to prevent steam from escaping from the water pan when the pressure is released, fill the steam cooling box inside the drip tray with water before applying steam.
2. Install the steam cooling box.



▪ Tamper

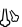


Tamp the coffee powder downwards

When the edge of tamper align to edge of funnel, powder amount is appropriate

III: Making Coffee

▪ Before the first use (important)

1. Check and make sure all accessories are complete and undamaged.
2. Fill the water tank with water, and the water level shall not exceed the max position
3. Take the high-pressure funnel (no coffee powder at this time) and align it with the buckle of the funnel support, and rotate it counterclockwise to lock the funnel (put a single cup or double cup filter screen as required)
4. Connect the power supply and press the power button to enter the preheating state until the whole machine is preheated and enters the standby state
5. Before using the steam function, please fill the water box inside the drip tray with water (to prevent steam scalding from the water tray when the pressure is released)
6. Turn the knob to the position  to release an appropriate amount of steam (please note that the steam pipe should be aligned with the water tray or use a cup to receive water to avoid scalding)
7. Press the button of single cup of espresso or double cup of espresso to clean the pipeline of the machine (please be careful not to put any part of your body under the funnel, please use the cup to receive water to avoid scalding).
8. After the water in the pan stops flowing out.
9. Thoroughly clean the detachable parts of the whole machine with warm water.

▪ Coffee Powder

Coffee should be freshly ground and deeply roasted. You may need to use French or Italian roasted coffee powder for espresso. Pre ground coffee powder can only remain fragrant for 7 to 8 days unless stored in a sealed container and in a cool place. Do not store coffee in the refrigerator or freezer. Generally, it is not recommended to use pre ground coffee powder. It is easier for coffee beans to retain coffee aroma and obtain higher coffee quality.

▪ Grind

If you are grinding coffee for yourself, this step is a key step in the production of espresso and needs more practice

- The right grinding powder should look like salt.
- If ground too finely, it may cause the coffee to flow out intermittently or make coffee.
- If the grinding is too coarse and the water flows too fast through the coffee, it will affect the strong aroma and taste of the coffee.
- You can adjust the thickness of ground coffee powder by adjusting the coffee bean box, which will vary according to the category and quality of coffee beans you use. Therefore, you still need to make appropriate adjustments to achieve the best effect
- Fresh roasted coffee beans (within 1 month). The grinding gear is set between 0-30. Single-cup grinder produces about 12-14g of powder, double-cup grinder produces about 19-21g of powder, with better coffee extraction (affected by the degree of roasting and freshness of coffee beans, may need to adjust the parameters)

- In order to prevent the coffee beans from being affected by moisture and affect the grinding and final coffee taste and effect, please do not put too many coffee beans in the bean box
- In order to obtain uniform and consistent coffee powder, please properly adjust the powder thickness of the grinder according to the category and quality of coffee beans, so as to obtain a cup of high-quality coffee.

This product has a coffee bean grinding function, before using this function, please ensure that all equipment is installed as required. Details are as follows:

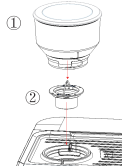


Figure 6

Cutter head 2 has been installed and tightened clockwise; Then put it into bean box 1 and screw it in as shown in Figure 6

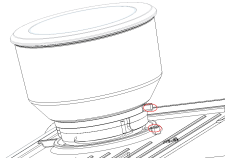


Figure 7

The position of the red circle in the figure has been aligned. Press it down and rotate it clockwise to load it into the bean box

Align the thickness of the beans in the middle of the box (as shown in the figure below, it is used to adjust the thickness of the beans in the middle of the box, as shown in the figure 9)

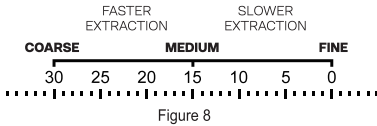


Figure 8

Figure 8: The larger the number, the larger the powder particles



Figure 9

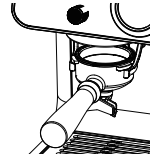





Figure 10



EN

1. Ensure that when the appliance is in place, the bean hopper light  on the panel changes from red to off, indicating that the grinder is ready for normal use.
2. Add an appropriate amount of coffee beans into the bean box. In order to avoid moisture affecting the grinding and final coffee taste and effect, please do not put too many coffee beans into the bean box.
3. Put the funnel into the left powder receiving support as shown in Figure 10.

Tips

1. Bean box indicator  is flashes when the bean box is not installed.
2. In order to protect the bean grinding system, when the continuous bean grinding is greater than 3 minutes in 6 minutes, the system will start to protect the motor function, the machine pauses to grind the beans, and the  prompt light flashes. When the interval time reaches 6 minutes, the system will automatically lift the restriction and the grinding system will return to normal.



■ Operation

1. The water level in the drinking water tank shall not exceed the "Max" position
2. Plug in the power supply, press the power button  (please make sure the steam knob is off in the  position), the machine enters the preheating.
3. On the left side of the pressure gauge is the grinding bean function display area, and on the right side is the working area of the coffee machine function. Here is how the indicator lights light up when the machine is in different states.

Tips

The steam and coffee functions of this machine can be used at the same time. Please pay attention to the function selection when operating the machine to avoid personal injury caused by wrong operation.

1. Preheating:

Press the  button to start the power supply, other function buttons and knobs light up and then go out, grinding beans indicator and  button light up, single cup grinding beans display 9 seconds, double cup grinding beans display 13 seconds, " - - - °C" flashes, the machine starts to preheat. When the default temperature of 92 °C and 130 °C is displayed, the preheating is complete. As shown in the picture below:





Preheating





Preheat complete

2. Single cup grinding and grinding time settings.

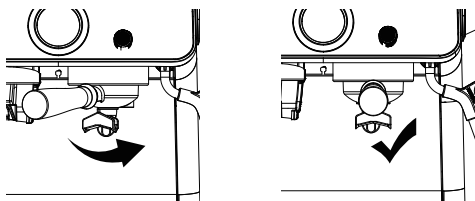
- (1) Press single cup grinding button  to grind single cup amount of coffee powder (default 9s).
- (2) Press and hold the button  for 2 seconds to enter the single cup grinding time adjustment mode, turn the left knob to adjust +1 second/-0.1 second.

3. Double cup grinding and grinding time settings.


- (1) Press double cup grinding button  to grind double cup amount of coffee powder (default 13s).
- (2) Press and hold the button  for 2 seconds to enter the double cup grinding time adjustment mode, turn the left knob to adjust +1 second/-0.1 second.




Tips

Before brewing coffee, make sure the portafilter is turned to the correct position as shown below







4. Espresso single cup extraction and cup volume settings:

(1) Press the  button to start single-cup extraction, the default temperature is 92 degrees, single-cup volume is 35ml.




(2) Long press the  button for 2 seconds to enter the cup volume setting mode, the right knob and the cup volume  icon light on, rotate the right knob to adjust the cup volume, stop the operation for 5 seconds or press other buttons to lock the parameter, the knob and the  icon light off.

5. Espresso double cup extraction and cup volume settings:


(1) Press the  button to start single-cup extraction, the default temperature is 92 degrees, double cup volume is 70ml.




(2) Long press the  button for 2 seconds to enter the cup volume setting mode, the right knob and the cup volume  icon light on, rotate the right knob to adjust the cup volume, stop the operation for 5 seconds or press other buttons to lock the parameter, the knob and the  icon light off.

6. Temperature Settings

Long press  and  buttons at the same time to enter the extraction temperature setting mode, the right knob lights up with the temperature light  on, rotate the right knob to adjust the temperature, stop the operation for 5 seconds or press other buttons to lock the parameter, the right knob and the temperature icon lights off.












7. Hot water function

(1) Press  button to run the hot water function. The cup volume is 200ml and it can be manually stopped. The display start to reads seconds when the hot water come out.


(2) Press and hold  for 2 seconds to enter the cup volume setting. Cup volume light  and right knob light on, rotate right knob to adjust hot water cup volume. Stop operation for 5 seconds or press other buttons to lock the parameters, the cup volume light  and the right knob light off.



8. Americano mode:

(1) Press the  button to make Americano (default 150ml of hot water then 50ml of coffee)




(2) Long press  button for 2 seconds to enter the cup volume adjustment mode,  and  buttons flash, then press  button to adjust the coffee cup volume mode,  button blinks, while  light does not blink,  cup volume light is on, rotate the right knob to adjust the coffee cup volume setting. Press  button to adjust hot water cup volume mode,  button blinks and  light does not blink,  cup volume light is on, rotate right knob to adjust hot water cup volume. Stop operation for 5 seconds or press other buttons to lock the current parameters.

9. Small steam mode:


(1) Press the  button to run the small steam function. Default temperature is 130°C. (Press the steam button and then turn on the steam knob)

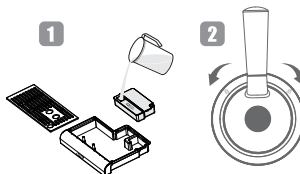
(2) Long press  button for 2 seconds to enter the adjustment mode, the right adjustment knob and temperature icon  light on, rotate the right knob to select the temperature (125 °C/130 °C/135 °C optional). Stop the operation for 5 seconds or press other buttons to lock the current parameters.

10. Large steam mode:

- (1) Press the  button to run the small steam function. Default temperature is 145°C. (Press the steam button and then turn on the steam knob)
- (2) Long press  button for 2 seconds to enter the adjustment mode, the right adjustment knob and temperature icon  light on, rotate the right knob to select the temperature (140 °C/145 °C/150 °C optional). Stop the operation for 5 seconds or press other buttons to lock the current parameters.

Tips


1. Before using the steam function, it is recommended that the steam cooling box in the drip tray be filled with water
2. Turn on the steam knob
Turn the knob to the  position (front and rear can be opened), as shown in the right figure
3. You can switch the steam size by pressing the large and small steam buttons When using the steam function.




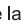






11. Pre-brew mode

Press  and  at the same time to adjust the pre-brew setting.

12. Toggles Celsius (°C) and Fahrenheit (°F):

Press the  and  buttons at the same time to toggle between Celsius and Fahrenheit.

13. Descaling mode:

1. In standby mode, press and hold down the small steam button  and the large steam button  to start the descaling program, and the  descaling indicator will light up.
2. When  blinks, turn the steam knob to the back  steam position, hot water will automatically come out of the brewing head and steam pipe, and stop automatically after 120 seconds.
3. When  blinks, turn the steam knob to the front  steam position, hot water will flow out of the hot water outlet automatically and stop after 240 seconds, the descaling step is completed.
4. When “E05” appears on the screen, turn the knob to  position.

14. Restore the factory settings:

Press  and  at the same time to restore the factory settings.

15. Sleep state:

The machine will automatically go to sleep when there is no operation for 10 minutes in standby mode. In the sleep state, press the power button to activate the machine to re-enter the preheating state.

IV: Cleaning and Maintenance

▪ Bean Hopper Cleaning

During the use of the grinder, the powder outlet channel will be blocked due to the influence of coffee beans and external factors. Please clean the powder outlet channel in time in case of the following circumstances

1. Clean the powder outlet channel and grinding wheel at least once every two weeks.
2. When the powder output decreases, please clean the powder output channel and grinding wheel.
3. When using the grinder to finish grinding fine coffee powder, please clean out the powder channel in time.

Cleaning method of bean grinder

Tips

When cleaning the grinder, please make sure there are no beans in the bean box, and press the grinder button, the grinder can work normally, no coffee powder out of the outlet.

1. Turn the bean box counterclockwise and remove the bean box.
2. Rotate the internal grinding wheel counterclockwise, clean the grinding wheel with the attached cleaning brush, and remove the coffee powder in the teeth; Please note that the mill wheel should not be washed directly with water.
3. Use the supplied cleaning brush to clean the grinder cavity and outlet channel.
4. Do not install the grinding wheel at this time, reinstall the empty bean box, press the grinding button, and let the grinder run to sweep out the remaining powder in the grinding bean cavity. (If not, repeat steps 3 and 4).
5. Remove the bean box counterclockwise, install the grinding bean wheel, and finish cleaning.

■ Descaling reminder

This product is equipped with a descaling reminder function and a descaling program that requires the user's cooperation during the descaling process.

- The descaling procedure is expected to take 10 minutes to run.
- Descaling is recommended every 4-6 months.
- This product will automatically trigger the descaling alarm after 15L of water has been used.

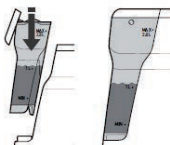
Descaling preparation

Note: after the descaling reminder is started or before the user starts the descaling program independently, please complete the following descaling preparations before running the descaling program!

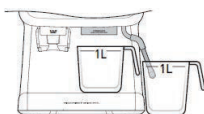
1. Add solution to the water tank (select one of the three methods)

- (1) Fill 1 liter of water into the water tank. Add descaling tablets and wait until the descaling tablets are dissolved;
- (2) Add half a cup of liquid descaling agent into the water tank, and then inject 1 liter of warm water to allow the solution to mix thoroughly
- (3) Add 1.5 tablespoons of white vinegar to the water tank, and then inject 1 liter of warm water to allow the solution to mix thoroughly

2. Insert water tank into position











3. Place a 1 liter container under the bubble head and another liter container under the steam tube



Descaling operations

After completing the above steps, you can start the cleaning procedure as follows:

1. In standby mode, press and hold down the small steam button  and the large steam button  to start the descaling program, and the  descaling indicator will light up.
2. When  blinks, turn the steam knob to the back  steam position, hot water will automatically come out of the brewing head and steam pipe, and stop automatically after 120 seconds.
3. When  blinks, turn the steam knob to the front  steam position, hot water will flow out of the hot water outlet automatically and stop after 240 seconds, the descaling step is completed.
4. When “E05” appears on the screen, turn the knob to  position.

▪ Daily Cleaning

Tips

Please unplug before cleaning and let the coffee machine cool sufficiently to prevent scalding. Do not immerse the coffee machine or power cord plug in water or other liquids to avoid danger.

1. After each use, put all removable parts into water for cleaning. If necessary, add cleaning solution and rinse with clean water.

2. Often use moisture-proof sponge to scrub the outer surface of the coffee machine to remove dirt.

Note: do not use alcohol or detergent, and do not immerse the machine in water for cleaning.

3. Turn clockwise to remove the metal funnel and remove the coffee grounds inside. Then you can clean the funnel and metal filter accessories with detergent, but finally you must rinse them with clean water.

4. After cleaning all removable parts, wipe all parts to dry.

Note: the detachable water tank cannot be put into the dishwasher for cleaning.

V: Coffee Machine Parameters

Model	H7B
Water Tank Capacity	2.8 L
Voltage & Power	AC 220-240V 50/60Hz, 2800W

VI: Troubleshooting

Problem	Cause	Solution
No display	Check whether the plug is inserted in place and whether the power switch is pressed.	Plug in the power plug and make sure the power key is pressed
After starting the machine, you can hear a ticking sound and a hissing sound after making coffee	This is a normal phenomenon and is the sound generated by the normal operation of the pressure control valve.	

Problem	Cause	Solution
There are marks of water at the bottom of the machine	<ol style="list-style-type: none"> 1. Water tank is not installed correctly 2. Drip tray not installed correctly 3. Drip tray is full 	<ol style="list-style-type: none"> 1. Ensure that the water tank and water box are installed properly. If they are installed properly, and the water tray has been emptied. 2. If still unable to solve, do not privately disassemble the machine, the machine to the local after-sales maintenance processing.
<ol style="list-style-type: none"> 1. no coffee comes out 2. Coffee flows out drop by drop 3. Coffee portafilter does not screw in properly 	<ol style="list-style-type: none"> 1. The amount of coffee powder exceeds the standard 2. The coffee powder is too fine 3. The powder pressing pressure is too high 	The amount of powder should not exceed the standard, and the grinding gear of the bean grinder should be adjusted appropriately until it is appropriate. It is not advisable to press the powder repeatedly with excessive force.
Coffee is fat free	The coffee beans are damp or the coffee powder is too thick	Choose fresh coffee beans and ground powder with moderate thickness to make coffee
No steam	<ol style="list-style-type: none"> 1. The steam function is not preheated completely 2. The steam nozzle is blocked 	<ol style="list-style-type: none"> 1. The machine can only pump steam after the steam is preheated 2. The machine needs descaling and the steam nozzle needs to be cleaned with a cleaning needle
After the steam comes out, you can't make coffee or hot water immediately, and the machine will pump water automatically	After the steam is pumped, it needs to be depressurized and cooled. At this time, no other operation can be carried out. The purpose of pumping water is to quickly cool the heating pot	It takes 20-30s for pressure relief and cooling. After pressure relief and cooling, coffee or hot water can be boiled only after the indicator on the panel is displayed normally
The grinder does not work AND/OR the grinder indicator (dot at the left side of the display) is illuminated red AND/OR a beep sounds when pressing the GRIND button and the system indicator flashes.	The grinder is not assembled correctly.	Ensure that the grinder burrs are installed and the bean hopper is mounted correctly and filled with fresh coffee bean.
	The grinder is blocked.	Disassemble and clean the grinder. Remove any obstacles. (There is a video reference for cleaning the grinder, please contact customer service.
	The shutter of the bean hopper and/or safety lock of the grinder are damaged.	Only with the shutter protrusion and the bean hopper in correct orientation, you can install the bean hopper with when pressing the GRIND lock of the grinder are ease. Do not use violence, when installing or removing the bean hopper! If you find the safety lock accessories are missing, please contact the merchant in time.

Problem	Cause	Solution
The grinder does not produce flour smoothly /slowly	The grinder Burr wear out	Please contact the merchant to provide the replacement video for replacement
The grinder stop unexpectedly and cannot be started again.	You ground lager amounts without breaks. The over-heat protection of the grinder is active.	Wait approx. 10 minutes. Then try again, after 3 minutes of continuous operation, make a break of approx. 6 minutes.
The espresso function does not work AND/OR the espresso function stops unexpectedly AND/OR froth comes out of the spouts of the portafilter.	The water thank is empty	Fill a sutffcient amount of water into the water tank. Always ensure that the filling level in the water tank is between the "MIN" and "MAX" making. before starting any function of the machine
	The grind size is too fine.	Only use coffee powder that is suited for espresso machinas. It is recommended to select the 10-20 grade when grinding the espresso powder
	The coffee powder is tamped too firmly.	Do not use too much force when compacting the ground coffee (about 10-15 kilograms is recommended)
	The water system strongly requires descaling.	Always descale the water system in time. If the water hardness of your tap water is extremely high use non-carbonated, low-mineral table water
	The pores of the filter basket are clogged.	Thoroughly clean the filter basket. If required use the needle tool for opening the pores of the filter basket.
During extraction, the coffee runs out at the exterior of the portafilter	The portafilter is not installed correctly	The handle of the portafilter must be at right angle to the front of the machine
	Coffee powder is spilled at the rim of the filter basket.	Carefully remove any surplus coffee powder from the rim of the filter basket, before installing the portafilter at the ground head.

Problem	Cause	Solution
During extraction, the coffee runs out at the exterior of the portafilter	Too much coffee powder in the filter basket.	Use the correct amount of coffee powder for the selected filter basket If required, select another filter basket
	Coffee powder stick to the sealing ring of the group head or the sealing ring is worn out, damaged or missing	Clean the group head. For cleaning the group head, only use a soft cloth or SOFT nylon brush. If the problem persists, get in contact with an authorized service centre for examination and repair. Do not poke in the group head with any hard or sharp-edged objects.
	The coffee powder is tamped too firmly.	Do not use too much force when compacting the ground coffee (about 10-15 kilograms is recommended)

Error Code	Cause	Solution
E01	NTC 1 short circuit	Please contact your local maintenance agency
E02	NTC 2 short circuit	
E03	Communication error	
E05	Steam knob is not turned off when power is on	Please turn the steam knob to position ◀▶

Tips

If you do not find the cause of the problem, please do not disassemble the machine. You should contact your local maintenance agency.

WARRANTY

WARRANTY INFORMATION TWO YEARS LIMITED WARRANTY

MANUFACTURER warrants that for a period of one years from the date of purchase, this product will be free from defects in material and workmanship. MANUFACTURER , at its option, will repair or replace this product or any component of the product found to be defective during the warranty period. Replacement will be made with a new or repaired product or component. If the product is no longer available, replacement may be made with a similar product of equal or greater value. This is your exclusive warranty. Do NOT attempt to repair or adjust any electrical or mechanical functions on this product. Doing so will invalidate this warranty.

This warranty is valid for the original retail purchaser from the date of initial retail purchase and is not transferable. Keep the original sales receipt. Proof of purchase is required to obtain warranty performance. MANUFACTURER'S dealers, service centers, or retail stores selling MANUFACTURER products do not have the right to alter, modify or any way change the terms and conditions of this warranty. This warranty does not cover normal wear of parts or damage resulting from any of the following: negligent use or misuse of the product, use on improper voltage or current, use contrary to the operating instructions, dis-assembly, repair or alteration by anyone other than MANUFACTURER or an authorized MANUFACTURER service center. Further, the warranty does not cover: Acts of God, such as fire, flood, hurricanes and tornadoes.

What are the limits on MANUFACTURER'S Liability?

MANUFACTURER shall not be liable for any incidental or consequential damages caused by the breach of any express, implied or statutory warranty or condition.

Except to the extent prohibited by applicable law, any implied warranty or condition of merchantability or fitness for a particular purpose is limited in duration to the duration of the above warranty. MANUFACTURER disclaims all other warranties, conditions or representations, express, implied, statutory or otherwise. MANUFACTURER shall not be liable for any damages of any kind resulting from the purchase, use or misuse of, or inability to use the product including incidental, special, consequential or similar damages or Loss of profits, or for any breach of contract, fundamental or otherwise, or for any claim brought against purchaser by any other party. Some provinces, states or jurisdictions do not allow the exclusion or limitation of incidental or consequential damages or limitations on how long an implied warranty lasts, so the above Limitations or exclusion may not apply to you. This warranty gives you specific legal rights, and you may also have other rights that vary from province to province, state to state or jurisdiction to jurisdiction.

To ensure your product warranty, please register your product at www.hibrew.com/warranty.



Environmental protection

You can help protect the environment!

Strictly abide by the regulations: Please put the discarded electrical equipment into the corresponding waste station for disposal



Made in China

HiBREW®



EC	REP	eVatmaster Consulting GmbH Bettinastr.30 60325 Frankfurt am Main, Germany Contact@evatmaster.com +496995179070
----	-----	--

MADE IN CHINA