

EN

FR

RU

ES

IT

DE

NL

PT

KR

AE

PORTABLE CAR ESPRESSO MAKER

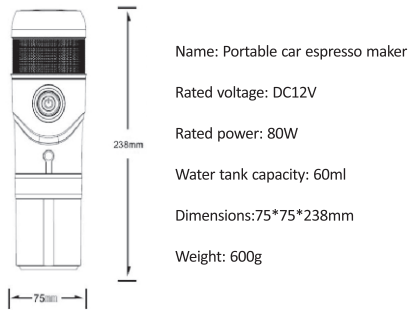
WITH 3 DIFFERENT ADAPTERS

SKU H4

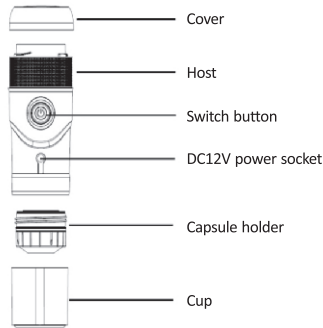
Before use

Please read carefully before using this product.

Product structure

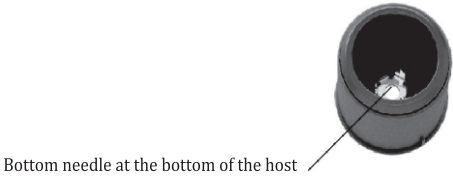
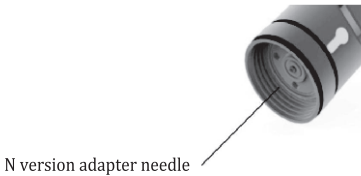


Product parameters



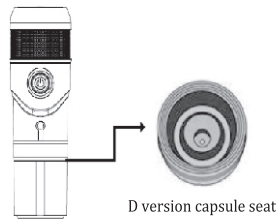
Precautions

1. Please use the corresponding coffee capsules according to different versions (see outer box).
2. After filling the capsule, please confirm whether the capsule holder and the host are tight to prevent water leakage.
3. When adding water to the tank, the water volume cannot exceed the maximum water level line and must be pure water.
4. Suitable for use with DC12V car power supply, home adapter.
5. When removing the coffee capsule after the extraction, be careful of steam burns.
6. Be careful of stabbing (the bottom of the main unit and the N-type adapter needle) when using or cleaning.
7. When cleaning, the main part should not be soaked in water and cleaned. Wipe it with a damp cloth.



Instruction manual

Product specifications and operating procedures : D version



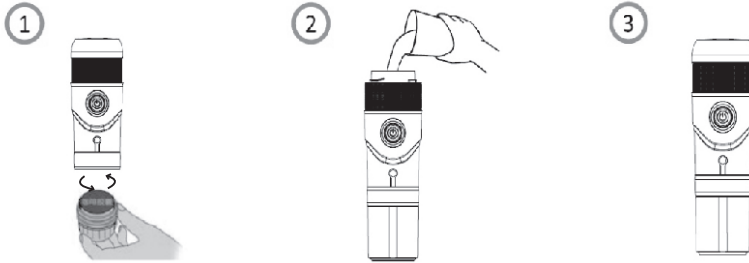
Coffee capsule filling (using Dolce Gusto coffee capsule):



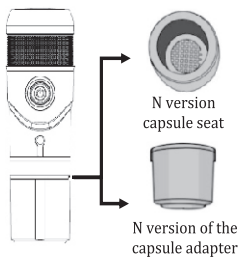
Put the coffee capsule directly into the D version capsule seat.

Extracting coffee

1. Insert the capsule holder of the Dolce Gusto coffee capsule into the bottom of the main unit, ensuring tightening.
2. Put the product into the cup, then rotate the top cover to remove it, pour the appropriate amount of cold water, and then rotate the top cover.
3. Connect the product to the DC12V power supply, then press the switch to start the product and wait for 5-7 minutes for a cup of coffee.



Product specifications and operating procedures : N version



Coffee capsule filling (using Nespresso genuine capsules):



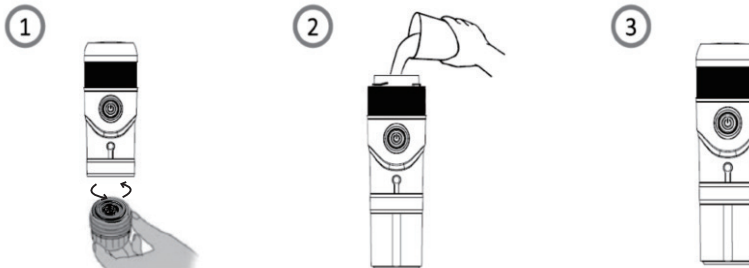
1. Put the capsule into the N-piece capsule upside down.



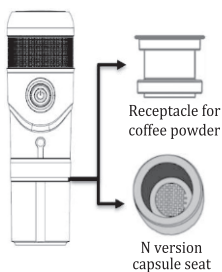
2. Put the N version of the adapter, the outer wall of the adapter is aligned with the groove on the inner wall of the base and gently pressed.

Extracting coffee

1. Insert the capsule holder of the Nespresso coffee capsule into the bottom of the main unit, ensuring tightening.
2. Put the product into the cup, then rotate the top cover to remove it, pour the appropriate amount of cold water, and then rotate the top cover.
3. Connect the product to the DC12V power supply, then press the switch to start the product and wait for 5-7 minutes for a cup of coffee.



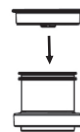
Product specifications and operating procedures : Coffee powder



Coffee powder filling:



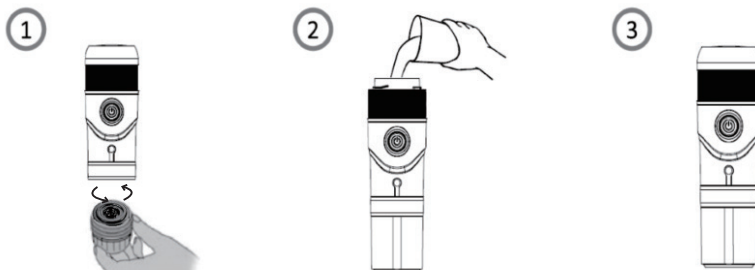
1. Use the spoon to add the coffee powder.



2. Use the cap to close the coffee powder container.

Extracting coffee

1. Insert the ground coffee container into the Nespresso capsule seat. Insert it into the main unit, making sure to tighten it securely.
2. Put the product into the cup, then rotate the top cover to remove it, pour the appropriate amount of cold water, and then rotate the top cover.
3. Connect the product to the DC12V power supply, then press the switch to start the product and wait for 5-7 minutes for a cup of coffee.

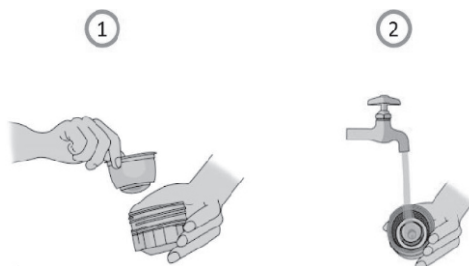


Cleaning

After making coffee every time

1. After the standby unit is completely cooled, remove and discard the used coffee capsules in the base.
2. Rinse the base with clean water. There are many mesh holes at the bottom of the base. Please use a brush to rinse and ensure that the mesh is not blocked.
3. The main body can be scrubbed with a damp cloth.



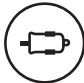
Note : The main body cannot be soaked in water.



Questions / answers

1. The indicator light flashes quickly and cannot work :
This is because the heater temperature is too high, the product is protected. If there is no water, please add . Before filling the tank, disconnect the unit from the power supply. Once the tank is full, plug the unit back in and turn it back on.
2. Water leaks at the capsule seat connection :
This is because the capsule seat is not tightened, please tighten the capsule seat.
3. The indicator is not lit and cannot work :
This is because the power supply is not connected and please reconnected.
4. When the machine is in the heating state, the ON/OFF button flashes the red light, and when the machine is not heated, the blue light flashes.
5. When the machine is powered on, the ON/OFF button flashes red twice and blue twice. After the blue light blinks twice, press the On/key again to start making coffee. If the machine does not work after first pressing the button, please press it again.

OPERATING INSTRUCTIONS

Plug	 USB charging cable	 AC charger	 Car charger
Heating option	NO	Yes	Yes
Operation step	Long press for 2-3 seconds.	Quick press to the on/off button once.	Quick press to the on/off button once.
Water boiling time	60s/to fill pre-heated water to the tank.	5-8mins	5-8mins



WARNING

For your Safety, please read instruction book carefully before use.
Do not operate the device during driving.



*Scan this QR code to view the product operation video.



Made in China