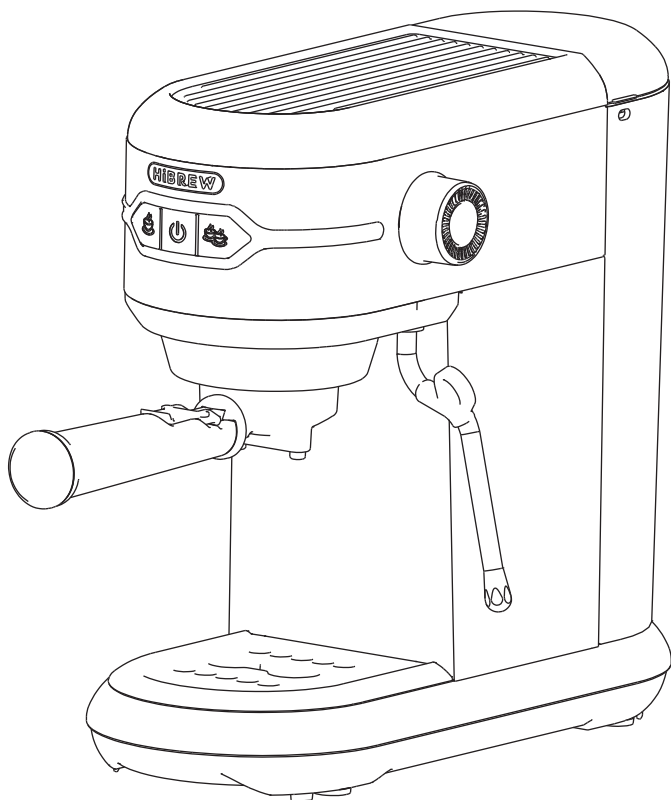


HiBREW®



EN

RU

FR

AE

CN

ES

ESPRESSO STATION H11-Slim

Model No.: H11

USER MANUAL



Safety precautions

Please take time to read these safety precautions carefully before connecting your machine to the power supply. It is essential to follow them and the operating instructions.

- First read this entire operating manual.
- Danger of electric shock! Never immerse the machine in water or any other liquid.
- Connect only to a properly grounded power point.
- To make sure that the machine is switched off, remove the plug from the power point.
- Always pull out the power plug before:
 - * Relocating the machine.
 - * Cleaning or maintenance.
 - * Long periods of disuse.
- Never clamp or run the power cable over sharp corners or edges.
- Danger of electric shock! Damaged power cables may only be replaced at the customer service centre.
- Danger of electric shock! Never touch the power plug/socket/cable or the machine with damp or wet hands. Never unplug by pulling out the power cable; always remove the plug.
- If you need an extension cable, make sure it is suitable for your machine (3-pole grounded, 1.5mm 2 conductor cross-section), and lay the cable to avoid tripping.
- Danger of scalding! Never move the machine during operation!
- Never operate the machine without water.
- Always make sure there is water in water tank not less than minimum level.
- Danger of burning! Never touch very hot parts of the machine (e.g. brew unit during operations).
- Danger of scalding! Do not touch the steam or water jets.
- Danger of scalding! Do not move the operating lever when the machine is still under pressure making Coffee.
- Do not use the machine in case of:
 - * Faulty operation.
 - * Damaged power cable.
 - * After falling or other damage.
- * In such cases immediately have the machine checked and repaired if necessary at the customer service centre.
- The machine location must meet the following requirements:
 - * Choose a dry, stable and level support surface not immediately underneath the power point. at least 60 cm away from the washbasin and taps.
 - * Never place on flammable/fusible surfaces or equipment.
 - * Never place the machine or power cable on or nearer than 50 cm to hot surfaces or open flames.
 - * Never cover the machine during operation.
- Keep children away from the machine during operation.
- Only use the machine in dry rooms.
- Danger of tripping! Do not let the power cable hang down.
- This machine is only intended for household use.
- Pull out the power plug and allow the machine to cool down completely before cleaning and or Maintenance.
- To prevent damage, never use replacement parts or accessories not recommended by the manufacturer.
- This appliance can be used by children aged from 8 years and above if they have been given supervision or instruction concerning use of the appliance in a safe way and if they understand the hazards involved. Cleaning and user maintenance shall not be made by children unless they are older than 8 and supervised. Keep the appliance and its cord out of reach of children aged less than 8 years.
- Appliances can be used by persons with reduced physical, sensory or mental capabilities or lack of experience and knowledge if they have been given supervision or instruction concerning use of the appliance in a safe way and understand the hazards involved. Children shall not play with the appliance.
- This appliance is not intended for use by persons (including children) with reduced physical, sensory or mental capabilities, or lack of experience and knowledge, unless they have been given supervision or instruction concerning use of the appliance by a person responsible for their safety.
- Children should be supervised to ensure that they do not play with the appliance.
- If the supply cord is damaged, it must be replaced by the manufacturer, its service agent or similarly qualified persons in order to avoid a hazard.
- This appliance is for household and indoor use only. The appliance must not be immersed. Caution! There is potential injury from misuse.
- Heating element surface is subject to residual heat after use.
- Coffee-maker shall not be placed in a cabinet when in use cleaning and user maintenance shall not be made by children without supervisor.
- This appliance is intended to be used in household and similar applications such as:
 - * Staff kitchen areas in shops, offices and other working environments;
 - * Farm houses;
 - * By clients in hotels, motels and other residential type environments;
 - * Bed and breakfast type environments.

Notes on this operating manual

This operating manual cannot cover all possible circumstances. For further information or in case of problems not adequately covered in this operating manual, please contact the service and sales centre.

Please keep this operating manual safe and pass it on to the next user.

Unpacking

- Remove your espresso Capsule coffee machine from its packaging.

- After unpacking, please check that the following parts are included:
1. Water tank 2. Coffee machine 3. Manual 4. Portable filter

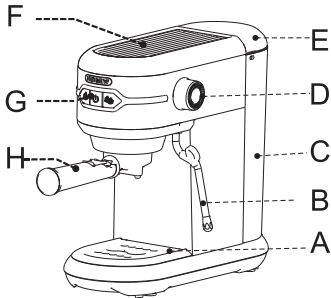
Note:

- Check that your home power supply voltage is the same as marked on the machine rating plate.
- Destroy all the plastic bags to prevent danger to children!

Tip: Keep the packaging for transporting the machine (e.g. for removals, servicing, etc.)

Note: You may find a little water remaining in the machine, this doesn't mean it is a used machine, instead, it is intended for keeping the pump wet in order to let the coffee machine is able to self priming properly.

Overview of machine parts and controls



Component description			
A	Drip tray	E	Water tank cover
B	Steam wand	F	Cup plate
C	Water tank	G	Control Panel
D	Function Knob	H	Portable filter

Button function instruction

Control Panel		
	On/Off button	Control the machine on/off.
	Single cup button	Press the one cup button, the indicator light will be flashing slowly, the machine starts brewing coffee, and the machine will stop automatically after brewing is completed.
	Hot water indicator	The indicator light will be flashing quickly when brewing hot water.
	Double cup button	Press the double cup button, the indicator light will be flashing slowly, the machine starts brewing coffee, and the machine will stop automatically after brewing is completed.
	Steam indicator	The indicator light will be flashing quickly when making the steam.

Function knob		
	Coffee function	Turn the knob to the middle when servicing Coffee (default)
	Steam function	Turn the knob clockwise to Steam Position when using steam for frothing milk.
	Hot water function	Turn the knob anticlockwise to Hot Water Position when using steam for frothing milk.

Preparation before startup

When turning on the machine, make sure the function knob is at Coffee position.

How to rinse internal circuit

The machine need to clean for the first use or long time no use.



At least 100 ml hot water should be dispensed with steam pipe, and then one cup of hot water should be dispensed in the porta filter. The processes are as following:

1



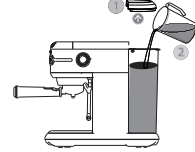
1. Make sure the Function knob is turned to Coffee position.

2



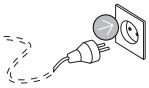
2. Put and turn the filter to the lock position.

3



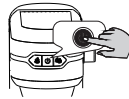
3. Lift the water tank cover. Add purified water to the water tank till the Max mark. (water temperature is not over 35 °C)

4



4. Plug to the socket.

5

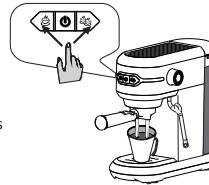


5. Press the On/Off button.
All indicator lights are flashing and the machine is heating up.
All indicator lights are steady and the machine finishes heating.


Clean the portable filter

1. Place a cup on the drip tray
2. Press the double cup button

Caution: Make sure the filter is on lock position and the water tank is filled to Max. Level.

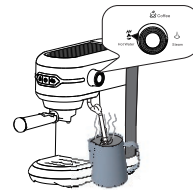


Steam pipe flushing


1. Place the cup under the steam pipe (capacity above 100ml)
2. Turn function knob to Hot water function 

The steam pipe starts making hot water until it is 100 ml.

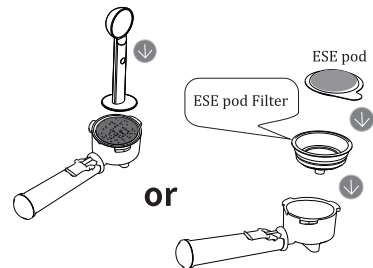
Note: If keep making hot water continuously till 120s without any operation, it will stop automatically. If you want continue, repeat step 1 and step 2.



How to brew coffee

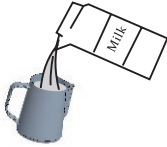
1. Make sure the Function knob is turned to Coffee position 
2. Add one spoon coffee powder to the portable filter, make sure the coffee powder size is suitable for espresso, about 8~10 g for single shot and 16~18 g for double shot. Press the coffee powder with the coffee tamper tightly. Except ground coffee, Use a ESE pod for brewing coffee.
3. Lock the portable filter to the correct position.
4. **Start Brewing**
 1. Place a cup on the drip tray
 2. Press desired coffee button (single or double) .
 3. When brewing cycle is completed, the machine will be stopped automatically.

Tips: The button light may be flashing for several seconds before coffee comes out which is for preheating, and this is normal.



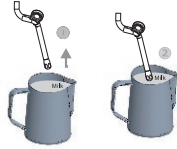
Milk frothing

1



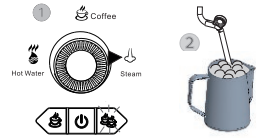
1. Pour pure milk into the frothing mug.
Caution: Min 50ml milk each time.

2



2. Put the cup with milk under the steam pipe, making sure the steam nozzle is immersed in the milk, approx 1cm far from the base of frothing mug.

3



3. Turn function knob to Steam position. The double cup button indicator light will flash quickly, then the machine enters the steam mode. After a while, steam will be automatically ejected to froth milk.

Note: It needs to wait for heating up a while before the steam comes out.

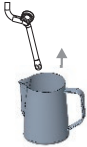
4. To stop milk frothing, turn the function knob back to the coffee function ☕ Coffee.

Note: The machine will stop making steam if it keeps working for 120s without any operation. If want to continue, you need to repeat step 3 and step 4.

Tip: after milk frothing, if to make coffee immediately, it is strongly required to brew a cup of water first, afterward, making coffee as normally, this will help avoid coffee burning taste.

Brewing hot water

1



1. Put the cup into the steam pipe.

2



2. Turn function knob to the hot water function. The Single cup button indicator light will flash quickly, and the machine will start to dispense hot water from the steam wand.

3



3. After get the desired hot water, turn function knob to the coffee function.

Note: The machine will stop making steam if it keeps working for 120s without any operation. If want to continue, you need to repeat Step 3 and Step 2 accordingly.

Standby mode

The machine will be turned off after 15 minutes if idle, and all the indicator lights will be off to save electricity.

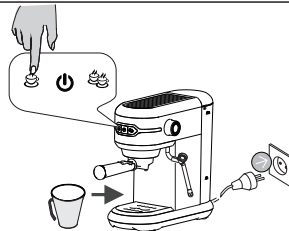
To quit standby mode, press the On/Off button.



How to do Descaling

Descaling mode function

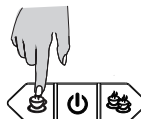
1. place a cup under the porta filter.
 2. Put a proper amount of detergent into the water tank.
 3. Keep pressing the single cup button and plug to the socket.
 4. The indicators for On/Off button & single cup button are on, press the single cup button to start the descaling function.
- The machine will stop automatically after 120s. If you want to stop descaling, press the single cup button to stop.



How to Program Coffee volume

Single cup volume setting

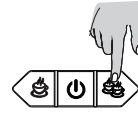
1. Put coffee cup under the coffee outlet.
2. The machine is in standby condition, pressing the single cup button and keep it pressed, release the button till you get the desired coffee volume.



Double cup volume setting

1. Put coffee cup under the coffee outlet.
2. The machine is in standby condition. pressing the double cup button and keep it pressed, release the button till you get the desired coffee volume .

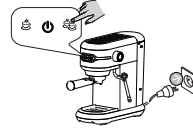
Tips: The programming time is between Min: 10S ~ Max: 90S. The machine will remember the new setting for next brewing.



Factory default settings

Press the double cup button, insert the plug into the socket. The Indicator li the machine Come back to factory default setting.

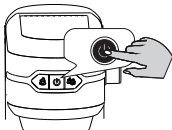
Predetermined brewing time:
22s for single espresso and 32s for double espresso



IMPORTANT REMINDER 1 (ALWAYS MAKE SURE THE WATER TANK IS FULL BEFORE BREWING):

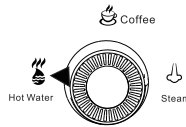
If the machine has water shortage during brewing coffee, the machine maybe won't dispense water even after refill, just follow the next steps to fix the issue.

1



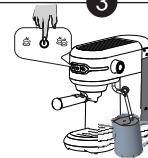
1.Press the On/Off button to turn the machine off.

2



2.Turn the function knob to the Hot Water position.

3



3.Put down a cup under the steam wand. Press the On/Off button and keep it pressed till there are water coming out from the steam wand. Then release the On/Off button. Now the machine is fixed to dispense water properly.

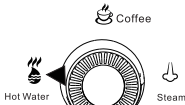
ALWAYS MAKE SURE THE WATER TANK IS FULL BEFORE BREWING, TO AVOID THIS INCONVENIENCE HAPPEN AGAIN.

IMPORTANT REMINDER 2 (ACTIVATE SELF PRIMING TO THE PUMP):

Due to the nature property of the solenoid pump,the machine may get self priming issue in first use or a long break (e.g. holidays) because the pump has been dry, to activate the pump, the following steps will help fix the issue, in case of necessary, repeat the processes 2-3 times.

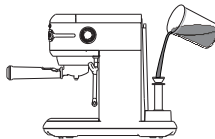
Tips: To avoid this kind of inconvenience happen, manufacturer will leave a little water inside the internal circuit to keep the pump wet, as a result, the protective bag may be foggy/wet, please DO NOT regard it as a used machine.

1



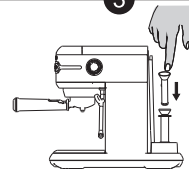
1.Turn the function knob to hot water.

2



2. Remove the water tank. Place the pipe into the water entrance. Fill the water into the pipe.

3



3.Place the stamp on the pipe and push it down firmly.

Clean the machine



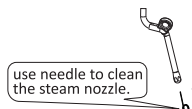
Warnings:

1. do not immerse the coffee machine into water.
2. Before cleaning the machine, make sure to unplug the power cord.
3. Do not use strong detergent, sharp objects, brushes and other hard objects to clean the coffee machine.



Steam wand cleaning

When the steam wand shows a significant decrease in water and steam, please clean the steam nozzle with a cleaning needle.

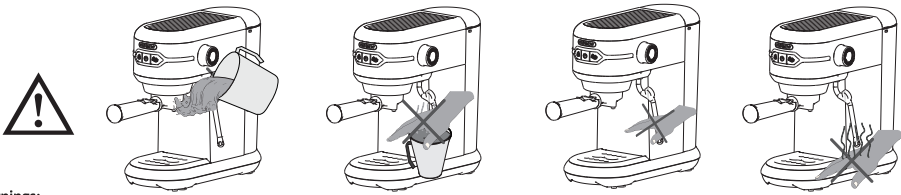


use needle to clean the steam nozzle.



Clean machine:

Dry with a fresh and clean towel, cloth or paper and reassemble all parts. Clean the coffee outlet and inside the machine regularly with a damp cloth. Rinse the porta filter with tap water, Do Not put it into dish washer machine.

**Warnings:**

Do not pour water directly on the machine!

Pay attention to high temperature! The steam pipe has high temperature and waste heat when making hot water and milk frothing.

Troubleshooting for your coffee machine

Problem	Cause	Solution
The indicator light doesn't work.	<ol style="list-style-type: none"> 1. The power supply is not connected. 2. The On/Off button is not pressed. 	<ol style="list-style-type: none"> 1. Check whether the power connector is plugged in properly. 2. The On/Off button is pressed. 3. Make sure that the power supply is plugged in properly and the power supply is matched correctly. If this phenomenon still occurs, please ask professional personnel for maintenance.
No coffee or dripping too slowly.	<ol style="list-style-type: none"> 1. There is no water in the water tank. 2. The coffee powder in the filter is squeezed too tightly, and the coffee powder is too fine or too much. 	<ol style="list-style-type: none"> 1. Fill water to the water tank. 2. Choose the right coffee powder and put it into the porta filter with correct weights.
Water leakage.	<ol style="list-style-type: none"> 1. Water tank leaks. 2. The porta filter is leaking. 	<ol style="list-style-type: none"> 1. Check whether the water tank is installed in place or damaged. 2. the porta filter has not been locked correctly. 3. do not make coffee immediately after using steam.
The machine can't work normally, all the indications are on, but not on when pressed.	The power supply is not connected.	Check whether the power socket is plugged in properly. If it doesn't work, please ask a professional for maintenance.
The coffee is wet after brewing.	<ol style="list-style-type: none"> 1. Ground coffee is not filled enough into porta filter. 2. Ground coffee is too fine. 3. Ground coffee is expired. 	<ol style="list-style-type: none"> 1. Add right amount of ground coffee to porta filter. 2. Do not grind coffee team too fine. 3. Use fresh roasted coffee bean. 4. You need to experience several times to find the best combination from right grinding and right tamping force.

Technical data

Product model	H11	Rated power	1450W
Rated voltage	220V-240V	Rated frequency	50Hz or 60Hz

Important Tips

1. Always run the machine with water only to remove residual taste and warm up the machine & your cup first.
2. Porta filter may get jammed if very fine coffee powder has been used, leave the machine to cool down completely in case occurred.
3. After making steam, the Single Cup/ Double Cup for coffee brewing function is inactivated due to temperature will be too high in such circumstance (indicated with fast flashing).



To activate it, turn the Functional Knob from "Steam" to "Hot Water" position to lower down the temperature, the fast flash will stop automatically when it is good.



Then turn the Functional Knob to "Coffee" position for brewing coffee normally.

4. For cappuccino/Latte, it is suggested to make espresso first, then make hot milk with steam afterward.



Please scan the QR code to watch the video.